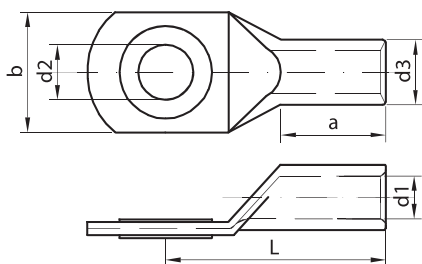


**AlCu CABLE COMPRESSIVE LUGS**  
**КАБЕЛЬНЫЕ НАКОНЕЧНИКИ ALCU**  
**COSSES ALUMINIUM-CUIVRE**



**MATERIAL: Al, Cu**  
**STANDARD: SRPS N.F4.101**  
**МАТЕРИАЛ: Al, Cu**  
**СТАНДАРТ: SRPS N.F4.101**  
**MATÉRIEL: Al, Cu**  
**STANDARD: SRPS N.F4.101**



No. п/п N. Ord.	Cable cross-section Сечение провода Section	Code Код (номер) Code	Type Тип Type	Dimension (mm) Размер (мм) Dimensions (mm)						Num.of pressmark* Номер опрессовки* Nombre de les sertissages*	Packing Упаковка Emballage	Weight Вес Poids
				a	b	d1	d2	d3	L			
1	16	P40-52-01	AlCu 16/6	25	21.3	5.8	6.5	12	45	4/2	100/500	14.00
2	16	P40-52-02	AlCu 16/8	25	21.3	5.8	8.5	12	45	4/2	100/500	14.22
3	16	P40-52-38	AlCu 16/10	25	21.3	5.8	10.5	12	45	4/2	100/500	16.09
4	16	P40-52-35	AlCu 16/12	25	21.3	5.8	13	12	45	4/2	100/500	19.65
5	25	P40-52-03	AlCu 25/8	26	21.3	6.8	8.5	12	47	4/2	100/500	13.60
6	25	P40-52-04	AlCu 25/10	26	23	6.8	10.5	12	47	4/2	100/500	16.10
7	25	P40-52-34	AlCu 25/12	26	27.5	6.8	13	12	47	4/2	100/500	19.30
8	35	P40-52-30	AlCu 35/8	28	21	8	8.5	14	48	4/2	100/500	19.45
9	35	P40-52-05	AlCu 35/10	28	26	8	10.5	14	48	4/2	100/500	22.17
10	35	P40-52-06	AlCu 35/12	28	28.5	8	13	14	53	4/2	100/500	24.67
11	50	P40-52-31	AlCu 50/8	28	25	9.8	8.5	16	50	4/2	100/500	24.55
12	50	P40-52-07	AlCu 50/10	28	25	9.8	10.5	16	50	4/2	100/500	26.19
13	50	P40-52-08	AlCu 50/12	28	28	9.8	13	16	53	4/2	100/500	28.52
14	70	P40-52-37	AlCu 70/8	29	28	11.2	8.5	18.5	58	4/2	50/250	34.36
15	70	P40-52-09	AlCu 70/10	29	28	11.2	10.5	18.5	58	4/2	50/250	36.68
16	70	P40-52-10	AlCu 70/12	29	30	11.2	13	18.5	59	4/2	50/250	38.85
17	70	P40-52-39	AlCu 70/16	29	30	11.2	17	18.5	59	4/2	50/250	54.60
18	95	P40-52-11	AlCu 95/10	44	34	13.2	10.5	22	74	5/3	50/250	54.00
19	95	P40-52-12	AlCu 95/12	44	34	13.2	13	22	75	5/3	50/250	53.49
20	95	P40-52-13	AlCu 95/16	44	34	13.2	17	22	75	5/3	50/250	57.96
21	120	P40-52-32	AlCu 120/10	48	34	14.7	10.5	23	80	6/3	50/250	71.44
22	120	P40-52-14	AlCu 120/12	48	34	14.7	13	23	80	6/3	50/250	81.18
23	120	P40-52-15	AlCu 120/16	48	36	14.7	17	23	80	6/3	50/250	75.09
24	150	P40-52-41	AlCu 150/8	55	35	16.3	8.5	25	98	6/3	25/150	93.10
25	150	P40-52-33	AlCu 150/10	55	35	16.3	10.5	25	98	6/3	25/150	92.80
26	150	P40-52-16	AlCu 150/12	55	35	16.3	13	25	98	6/3	25/150	91.24
27	150	P40-52-17	AlCu 150/16	55	38	16.3	17	25	98	6/3	25/150	100.40
28	150	P40-52-18	AlCu 150/20	55	40	16.3	21	25	98	6/3	25/150	109.89
29	185	P40-52-42	AlCu 185/8	58	40	18.3	8.5	28.5	100	6/3	25/100	127.25
30	185	P40-52-36	AlCu 185/10	58	40	18.3	10.5	28.5	100	6/3	25/100	126.94
31	185	P40-52-19	AlCu 185/12	58	40	18.3	13	28.5	100	6/3	25/100	134.38
32	185	P40-52-20	AlCu 185/16	58	40	18.3	17	28.5	100	6/3	25/100	141.50
33	185	P40-52-21	AlCu 185/20	58	44	18.3	21	28.5	100	6/3	25/100	145.00
34	240	P40-52-40	AlCu 240/10	62	44	21	10.5	32	106	7/3	25/100	172.00
35	240	P40-52-22	AlCu 240/12	62	44	21	13	32	106	7/3	25/100	169.40
36	240	P40-52-23	AlCu 240/16	62	44	21	17	32	107	7/3	25/100	183.92
37	240	P40-52-24	AlCu 240/20	62	45	21	21	32	107	7/3	25/100	184.00
38	300	P40-52-25	AlCu 300/16	62	45	23.3	17	34	107	7/3	10/50	210.00
39	300	P40-52-26	AlCu 300/20	62	45	23.3	21	34	107	7/3	10/50	215.00

\* - Number of mechanical (manual) crimps/number of hydraulic crimps  
 Количество механических (ручных) опрессовок / количество гидравлических опрессовок  
 Le nombre des pressages mécaniques (manuels) / nombre des pressages hydrauliques